

ادفانسد بزنس سولوشنز م م ع
Advanced Business Solutions FZE

Our Partners



YOUR CUSTOMER SATISFACTION

Solutions

ADVANCED

BUSINESS
2023



Mission

Organizations need support from their key stakeholders, such as employees, owners, suppliers, and customers, if they are to prosper. A mission statement should explain to stakeholders why they should support the organization by making clear what important role or purpose the organization plays in society.

Vision

Good business leaders create a vision, articulate the vision, passionately own the vision, and relentlessly drive it to completion. One of them is the ability to inspire employees to work hard to improve their organization's performance. Effective strategic leaders are able to convince employees to embrace lofty ambitions and move the organization forward. In contrast, poor strategic leaders struggle to rally their people and channel their collective energy in a positive direction.

Goals

It is tempting to extend this thinking to conclude that setting nearly impossible goals would encourage even stronger effort and performance than does setting aggressive goals. People tend to get discouraged and give up, however, when faced with goals that have little chance of being reached.

ادفانسد بزنس سولوشنز م م ع
Advanced Business Solutions FZE

CONTACT US

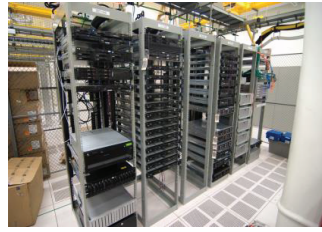
Business Centre, P.O. Box 49805
Hamriyah Free Zone, Sharjah, UAE



YOUR CUSTOMER SATISFACTION
M : +971 50 505 4331
T : +971 6 521 6858
E : subu@abs.ae
W : www.abs.ae

Services

Server As Service (SAS)



▶ ABS delivers a comprehensive range of IT servers that provide the building blocks of simpler, more integrated infrastructures. Our team of specialist stand ready to meet your hardware implementation needs. With years of experience in storage solutions, storage area network Infrastructure, IT servers, data center infrastructure. Our Team has tools to meet your Server needs and Design & Implement solutions from Hardware level to Application level (DC / Exchange/ Security Center / SQL /DATA Migration) on Local and Cloud Data Centre. Integration Services is a platform for building enterprise-level data integration and data transformations.

Communication As Service (CAS)



▶ In today's world, many (if not most) of applications leverage communication functionalities. Whether it is through sending emails, text messages, making or receiving phone calls, chatting (one-on-one or in a group), sharing screen, or making voice or video calls over IP, these functionalities are adding a social aspect to our applications. Communication should be at the core of any business because (and this might sound obvious) business is first and foremost about people and people need to communicate with each other. Having communication functionalities built into your applications can certainly boost your business.

Network As Service (NAS)



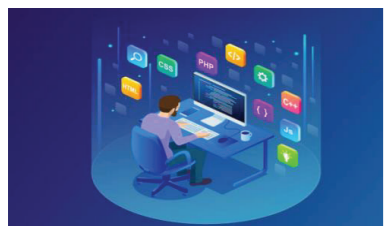
▶ Ideally, your network should be able to deliver the same high-quality experience in all regions. We sometimes call this phenomenon "ethernet everywhere," and businesses are increasingly in pursuit of this feature. With global businesses operating across multiple continents, corporate network integration can standardize services wherever employees and customers are found.

Digital As Service (DAS)



▶ We help clients become scalable, agile, and keep them ahead in days of an always on, hyper connected business environment. Our solutions enable enterprises to reimagine business models that unlock ecosystem opportunities and possibilities, integrate new revenue channels, and boost value co creation at scale. Installation / Configuration on Malls / Warehouse / Office / Shops / Villas / Home...etc. get Approved by Dubai / Sharjah emirates.

Application As Service (AAS)



▶ Application integration services enable the sharing of processes and business data among a wide range of applications in an organization. This means seamlessly connecting a variety of on-premise and cloud apps to transform and orchestrate the data required for business workflows. These applications address several business needs and can be anything from CRM and e-commerce platforms to finance and ERP systems. Application integration helps bridge the gap between existing on-premises systems and fast-evolving cloud-based enterprise applications. Through seamlessly interconnected processes and data exchanges, application integration allows enterprises to orchestrate a variety of functions across their entire infrastructures, enabling businesses to operate more effectively and efficiently.



The Team



Ashok Sharma - graduated from IIT Madras, India with a B. Tech (Elec Engg. - LC) with distinction. He worked as Staff Engineer at IBM WTC, India and as R&D Manager at DCM Data Products, India - before moving to the Middle East to join Emitac / Datamation Systems as Sales and Marketing Manager, responsible for setting up the HP printer and PC distribution network. He was responsible for designing, manufacturing, marketing and supporting CUB, the first locally assembled PC in the Middle East. Before becoming a promoter/director of ABS, Ashok worked for Microsoft Middle East for ten years in various capacities including Regional Manager - Emerging Enterprises. He has received Microsoft Chairman's Award, IBM's Outstanding Contribution award, Hewlett Packard's Outstanding Contribution Award as well as Federation of Indian Chamber of Commerce's Best R&D Award.

Paul O'Kirwan - Technical Director - has in-depth knowledge of IT architecture. Paul has over 30 years experience in IT including 14 years as a Microsoft Consultant, including five years as the Microsoft Principal Consultant. He has made major contributions in implementation of complex IT operations for many large Data centers including Emirates Airlines, ADNOC group, PDO. Paul has been responsible for designing and building Hosted Exchange Platforms for ISP's and Telecommunications providers and is an expert in planning the migration to a hosted environment.

Subhash - System Integrator graduated as Computer Engineer from India Mumbai, He worked as Technical Engineer in Mumbai India for 11 Years & Moved to Dubai as Computer Engineer Worked on all IT products & Implementing / integrating on Microsoft CRM and worked on Customized Application and Database system in ERP Solutions. Implementation of Hardware/Software/Networks /CCTV....etc. and now closely working with partners on Artificial Systems, Automate Heavy Equipment's

Network Engineer - graduated as Computer Engineer work as Technical Network Administrator. He had well experience in Hardware & Network Products. Installation & Implementation of large/small network on Software /Hardware / Routers /CCTV Surveillance

Network Support - graduated as Computer Engineer and moved to Dubai as Network support , He worked and had well experience in fields of Structure cable , Communication system , Sound system Routers /CCTV Surveillanceetc on large / small environment

Developer - graduated from Kochi India as BTech Computer Engineer. He Worked on Application core developer on our Customized ERP Application and system integrator on Real Estate / Property Managements and system integrator.

The Team Organization Chart

